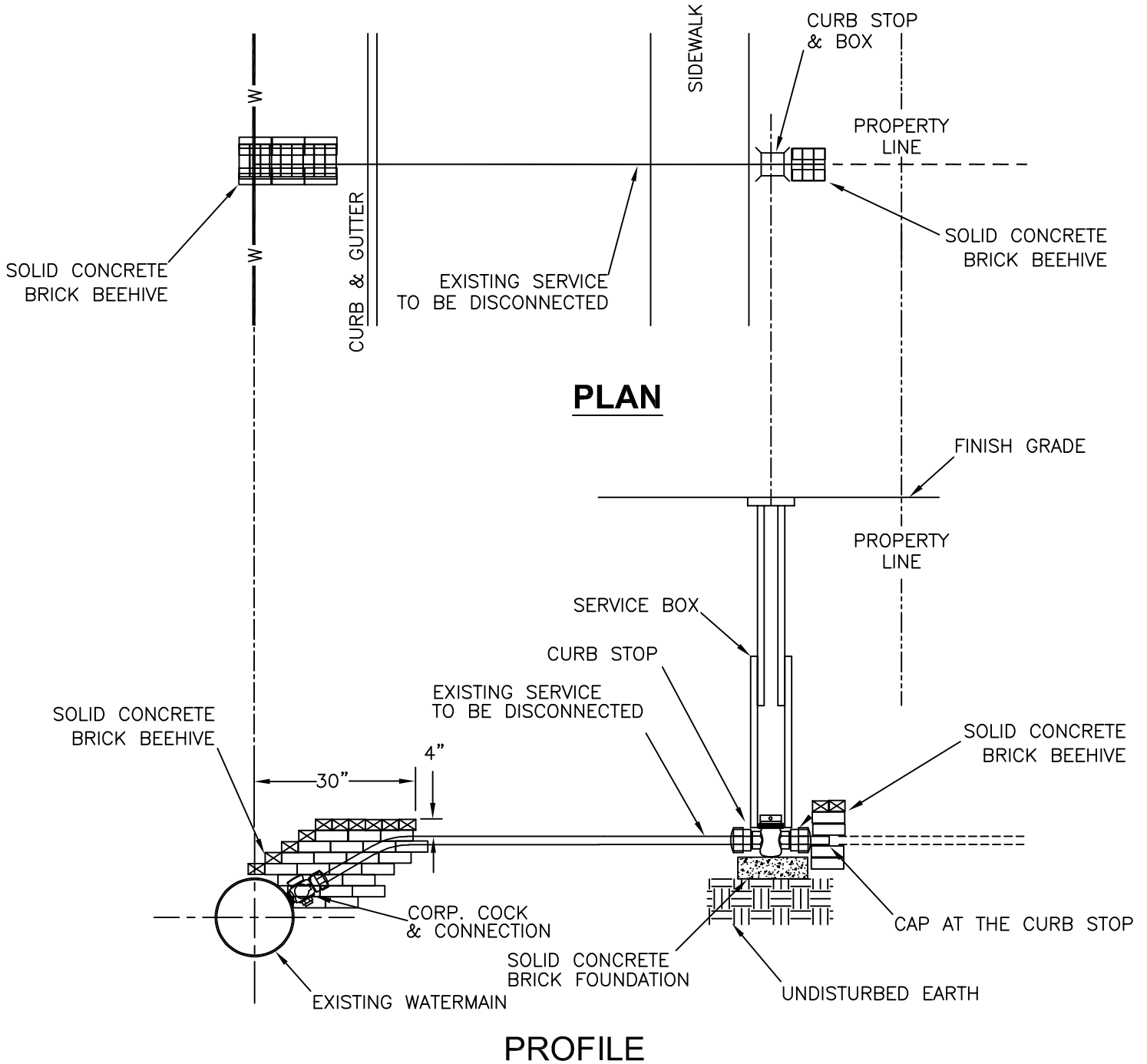


# STANDARD DESIGN WATER SERVICE DISCONNECT TYPICAL WATER SERVICE



**NOTES:**

1. BRICK BEE-HIVE SHALL BE TWO ROWS ABOVE SEVERED SERVICE AND TWO ROWS BELOW SERVICE AND SHALL COVER 6" OF LINE.
2. THE EXISTING WATER SERVICE LINE SHALL BE SEVERED BY A METHOD WHICH WILL NOT DAMAGE THE REMAINDER OF THE WATER SERVICE. ANY DAMAGE WILL BE REPAIRED BY THE CONTRACTOR AT CONTRACTOR'S OWN COST.
3. WATER SERVICE DISCONNECT AT WATER MAIN SHALL HAVE CAP INSTALLED AT CORP. COCK CONNECTION IN PLACE OF PREVIOUS SERVICE LINE.

CITY OF DECATUR, ILLINOIS WATER MANAGEMENT DEPARTMENT	ISSUED: 10/31/23 REVISIONS BY   DATE
ADOPTED      OCTOBER 31, 2023	KSG    1/1/2003 KEZ    10/31/23
_____ DIRECTOR OF PUBLIC WORKS	_____ _____ _____

STANDARD# 4070  
SHEET #1 OF 2