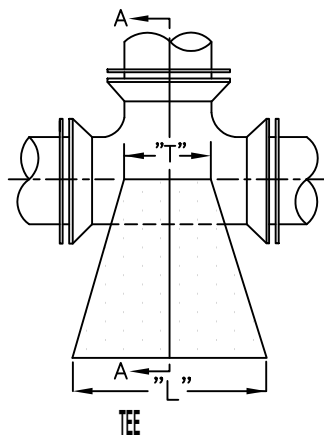
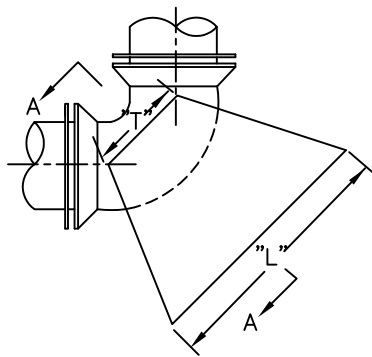


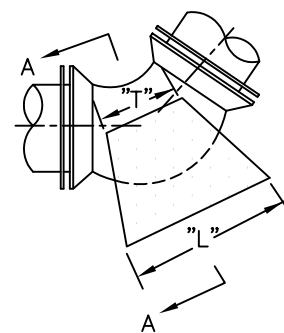
STANDARD DESIGN CONCRETE BLOCKING WATERMAIN - 12" TO 42"



TEE

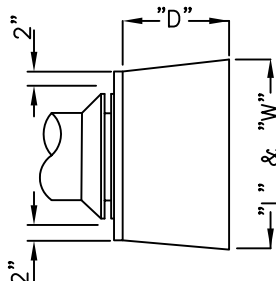


90° BENDS

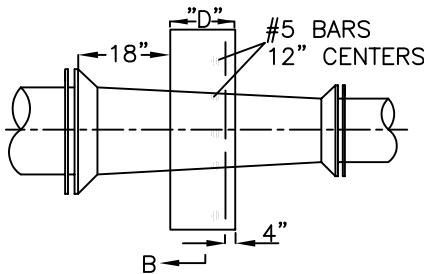


45° & 22 1/2° BENDS

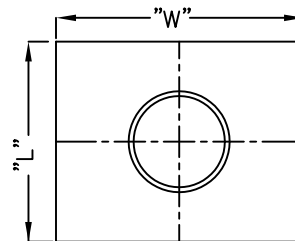
PLACE 16 GAUGE
SHEET METAL PLATE
BEHIND PLUG



PLUG



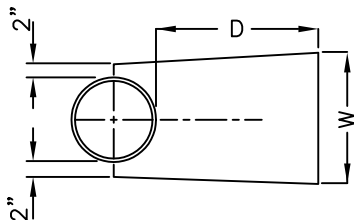
REDUCER



SECTION B-B

NOTES:

1. DEPTH "D" MAY BE GREATER THAN SPECIFIED TO ALLOW WORKING SPACE. BLOCK MUST BE POURED AGAINST UNDISTURBED EARTH.
2. POURED BLOCKING NOT TO HINDER REMOVAL OR INSTALLATION OF BOLTS ON MJ FITTINGS.



SECTION A-A

		BLOCKING DIMENSION						
	SIZE	12"	16"	20"	24"	30"	36"	42"
TEE	D	6"	8"	12"	20"	30"	36"	44"
	L	24"	32"	50"	62"	84"	96"	144"
	W	24"	32"	40"	48"	60"	80"	120"
	T	18"	22"	27"	32"	34"	36"	36"
90° BENDS	D	10"	15"					
	L	34"	54"					
	W	38"	54"					
	T	14"	18"					
45° BENDS	D	8"	8"	12"	18"	20"	24"	
	L	26"	36"	48"	60"	63"	66"	
	W	20"	36"	36"	42"	48"	60"	
	T	8"	22"	24"	32"	32"	33"	
22 1/2° BENDS	D				10"			
	L				42"			
	W				36"			
	T				24"			
PLUG	D	6"	10"		18"	27"	30"	
	L	30"	36"		52"	60"	96"	
	W	30"	36"		52"	60"	96"	
REDUCER	SIZE	42"x36"	36"x30"	36"x24"	30"x24"	30"x16"		
	D	12"	12"	12"	12"	12"		
	L	72"	48"	60"	42"	48"		
	W	72"	48"	60"	42"	48"		

CITY OF DECATUR, ILLINOIS
DEPARTMENT OF ENGINEERING
& INFRASTRUCTURE

ISSUED: 7-3-78
REVISIONS
BY DATE
R.W.D. 4/9/97
R.N.B. 1/1/03

ADOPTED JANUARY 1, 2003


DIRECTOR OF ENGINEERING & INFRASTRUCTURE

STANDARD #4021