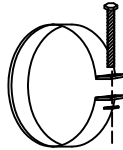


STANDARD DESIGN METAL END SECTION FOR PIPE CULVERTS

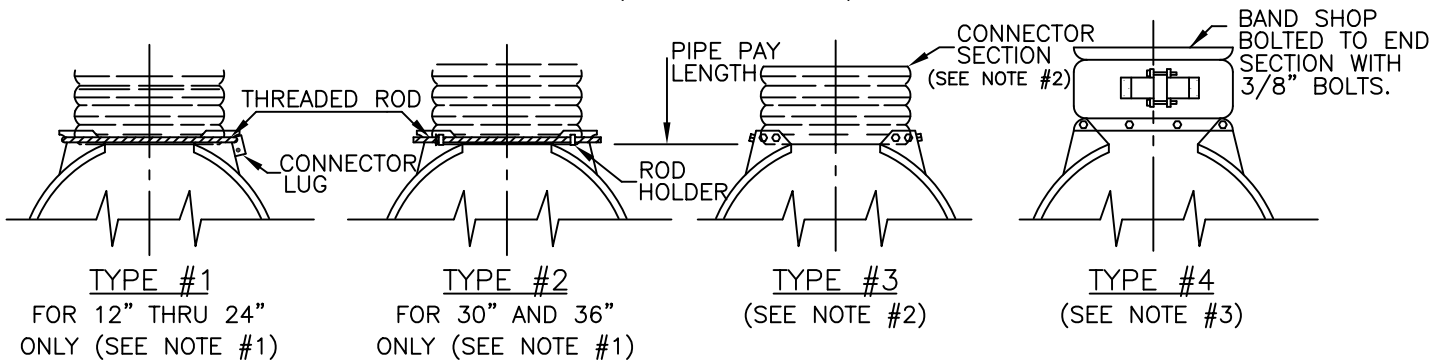
CONNECTION OF END SECTIONS

1" WIDE, 0.109"
THICK STRAP WITH
STANDARD 6" x 1/2"
BAND, BOLT AND NUT.



ALTERNATE STRAP CONNECTOR

(FOR TYPE 1 ONLY)



NOTES:

1. TYPES #1 AND #2 FOR PIPES WITH ANNULAR ENDS ONLY.
2. TYPE #3 CONNECTION CAN BE USED FOR ALL PIPE SIZES AND INCLUDES 1 FOOT OF THE PIPE LENGTH. THE CONNECTORS SECTION SHALL BE ATTACHED TO THE END SECTION BY RIVETS OR BOLTS AND SHALL BE THE SAME METAL THICKNESS AS THE END SECTION. STUB TO BE EITHER 2²/₃" PITCH x 1/2" DEPTH OR 3" PITCH x 1" DEPTH ANNULAR CORRUGATED PIPE.
3. TYPE #4 CONNECTION CAN BE USED FOR ALL PIPE SIZES. COUPLER SHALL BE 2²/₃" x 1/2" DIMPLE, HUGGER OR ANNULAR BAND OR 3" x 1" ANNULAR BAND. THE DIMPLE, HUGGER OR ANNULAR BAND MAY BE USED WITH CORRUGATED METAL PIPES HAVING ANNULAR ENDS. FOR CORRUGATED PIPES HAVING HELICAL ENDS, ONLY THE DIMPLE BAND WILL BE ALLOWED.
4. WHEN THE PIPE IS BITUMINOUS COATED, IT WILL NOT BE NECESSARY TO COAT END SECTIONS OR CONNECTOR SECTIONS.

CITY OF DECATUR, ILLINOIS
DEPARTMENT OF ENGINEERING
INFRASTRUCTURE

ADOPTED JANUARY 1, 2003


 DIRECTOR OF ENGINEERING & INFRASTRUCTURE

ISSUED:	
REVISIONS	
BY	DATE
F.W.T.	12/15/81
SHOE	9/15/89
KSG	10/2002

STANDARD# 3074
SHEET# 2 OF 2