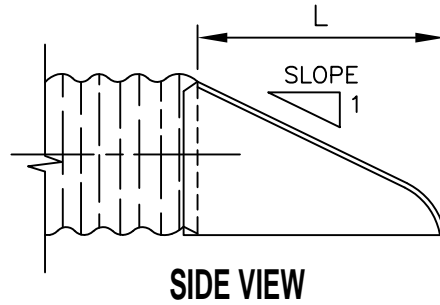
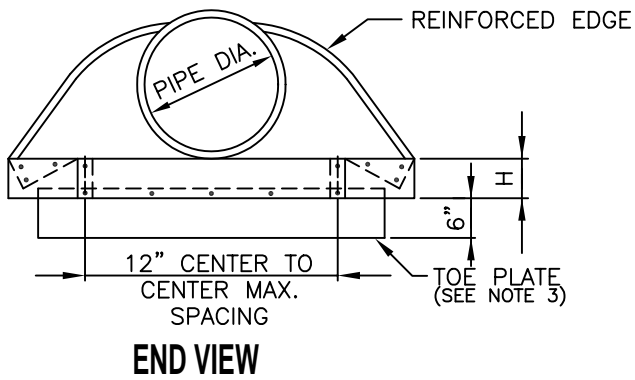
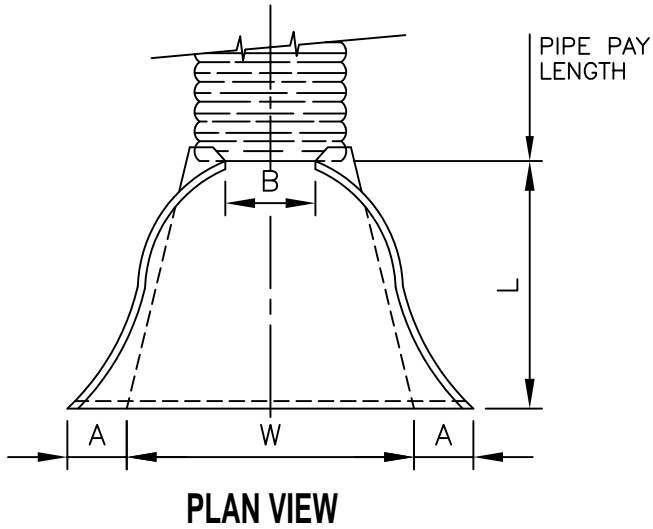


STANDARD DESIGN METAL END SECTION FOR PIPE CULVERTS



NOTES:

1. ALL 3 PIECE BODIES SHALL HAVE .109 INCH SIDES AND .138 INCH CENTER PANELS. WIDTH OF CENTER PANELS SHALL BE GREATER THAN 20% OF THE PIPE PERIPHERY. MULTIPLE PANEL BODIES SHALL HAVE LAP SEAMS WHICH SHALL BE TIGHTLY JOINED WITH 3/8" DIA. RIVETS OR BOLTS.
2. FOR 60" THRU 84" SIZES, REINFORCED EDGES SHALL BE SUPPLEMENTED WITH STIFFENER ANGLES. THE ANGLES SHALL BE 2" x 2" x 1/4" FOR 60" THRU 72" DIAMETER AND 2 1/2" x 2 1/2" x 1/4" FOR 78" AND 84" DIAMETER. THE ANGLES SHALL BE ATTACHED BY 3/8" DIA. RIVETS AND BOLTS.
3. THE TOE PLATE SHALL BE THE SAME THICKNESS METAL AS THE END SECTION.

PIPE DIA.	THICKNESS INCHES	DIMENSIONS					SLOPE (APPROX.)	BODY
		A (1"±)	B (MAX.)	H (1"±)	L (1 1/2"±)	W (2"±)		
12	0.064	6	6	6	21	24	2 1/2	1Pc.
15	0.064	7	8	6	26	30	2 1/2	1Pc.
18	0.064	8	10	6	31	36	2 1/2	1Pc.
21	0.064	9	12	6	36	42	2 1/2	1Pc.
24	0.064	10	13	6	41	48	2 1/2	1Pc.
30	0.079	12	16	8	51	60	2 1/2	1Pc.
36	0.079	14	19	9	60	72	2 1/2	2Pc.
42	0.109	16	22	11	69	84	2 1/2	2Pc.
48	0.109	18	27	12	78	90	2 1/2	2Pc.
54	0.109	18	30	12	84	102	2	2Pc.
60	0.109	18	33	12	87	114	1 3/4	3Pc.
66	0.109	18	36	12	87	120	1 1/2	3Pc.
72	0.109	18	39	12	87	126	1 1/2	3Pc.
78	0.109	18	42	12	87	132	1 1/4	3Pc.
84	0.109	18	45	12	87	138	1 1/8	3Pc.

CITY OF DECATUR, ILLINOIS
DEPARTMENT OF ENGINEERING
INFRASTRUCTURE

ADOPTED JANUARY 1, 2003

DIRECTOR OF ENGINEERING & INFRASTRUCTURE

ISSUED:

REVISIONS
BY DATE

F.W.T.	12/15/81
SHOE	9/15/89
KSG	10/2002

STANDARD# 3074
SHEET# 1 OF 2