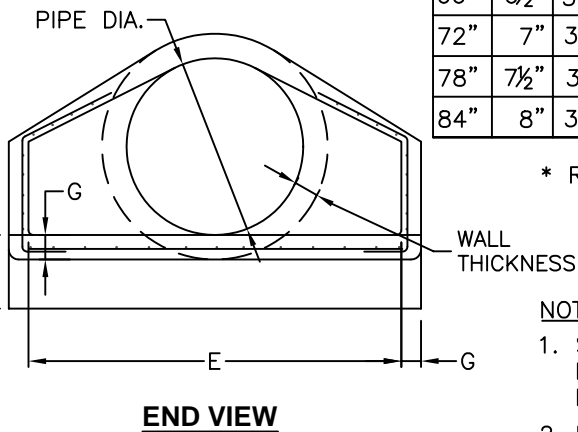
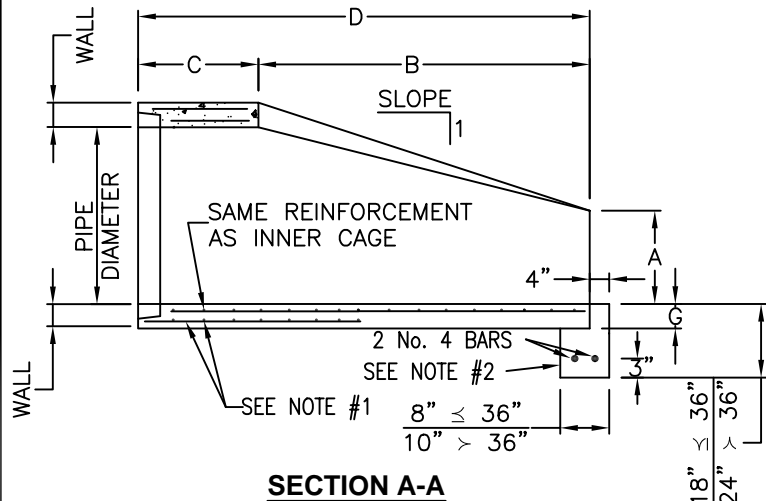
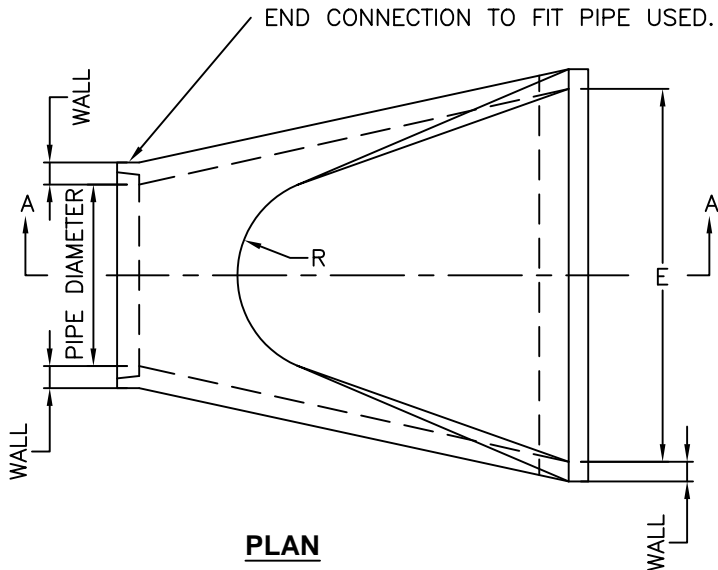


STANDARD DESIGN PRECAST REINFORCED CONCRETE FLARED END SECTION



PIPE DIA.	WALL	A	B	C	D	E	G	R	SLOPE V:H
12"	2"	4"	24"	4'-0 ⁷ / ₈ "	6'-0 ⁷ / ₈ "	2'-0"	2"	9"	1:2.4
15"	2 ¹ / ₄ "	6"	27"	3'-10"	6'-1"	2'-6"	2 ¹ / ₄ "	11"	1:2.4
18"	2 ¹ / ₂ "	9"	27"	3'-10"	6'-1"	3'-0"	2 ¹ / ₂ "	12"	1:2.4
21"	2 ³ / ₄ "	9"	35"	38"	6'-1"	3'-6"	2 ³ / ₄ "	13"	1:2.4
24"	3"	9 ¹ / ₂ "	3'-7 ¹ / ₂ "	30"	6'- ¹ / ₂ "	4'-0"	3"	14"	1:2.5
27"	3 ¹ / ₄ "	10 ¹ / ₂ "	4'-0"	25 ¹ / ₂ "	6'-1 ¹ / ₂ "	4'-6"	3 ¹ / ₄ "	14 ¹ / ₂ "	1:2.4
30"	3 ¹ / ₂ "	12"	4'-6"	19 ³ / ₄ "	6'-1 ³ / ₄ "	5'-0"	3 ¹ / ₂ "	15"	1:2.5
33"	3 ³ / ₄ "	13 ¹ / ₂ "	4'-10 ¹ / ₂ "	39 ¹ / ₄ "	8'-1 ³ / ₄ "	5'-6"	3 ³ / ₄ "	17 ¹ / ₂ "	1:2.5
36"	4"	15"	5'-3"	34 ³ / ₄ "	8'-1 ³ / ₄ "	3'-0"	4"	20"	1:2.5
42"	4 ¹ / ₂ "	21"	5'-3"	35"	8'-2"	6'-6"	4 ¹ / ₂ "	22"	1:2.5
48"	5"	24"	6'-0"	26"	8'-2"	7'-0"	5"	22"	1:2.5
54"	5 ¹ / ₂ "	27"	5'-5"	35"	8'-4"	7'-6"	5 ¹ / ₂ "	24"	1:2.0
60"	6"	35"	5'-0"	39"	8'-3"	8'-0"	5"	*	1:1.9
66"	6 ¹ / ₂ "	30"	6'-0"	27"	8'-3"	8'-6"	5 ¹ / ₂ "	*	1:1.7
72"	7"	36"	6'-6"	21"	8'-3"	9'-0"	7"	*	1:1.8
78"	7 ¹ / ₂ "	36"	7'-6"	21"	9'-3"	9'-6"	6 ¹ / ₂ "	*	1:1.8
84"	8"	36"	7'-6 ¹ / ₂ "	21"	9'-3 ¹ / ₂ "	10'-0"	6 ¹ / ₂ "	*	1:1.6

* RADIUS AS FURNISHED BY MANUFACTURER

NOTES:

- STANDARD REINFORCEMENT SHALL CONFORM TO REQUIREMENTS FOR CIRCULAR CLASS III, WALL B REINFORCED CONCRETE PIPE.
- END BLOCK SHALL BE PRECAST OR CAST IN PLACE.
- PRECAST CONCRETE FLARED END SECTION SHALL CONFORM TO THE APPLICABLE REQUIREMENTS OF AASHTO M-170 CLASS III, WALL B REINFORCED CONCRETE PIPE.

CITY OF DECATUR, ILLINOIS
DEPARTMENT OF ENGINEERING
INFRASTRUCTURE

ADOPTED JANUARY 1, 2003

DIRECTOR OF ENGINEERING & INFRASTRUCTURE

ISSUED: 7-3-78	
REVISIONS	
BY	DATE
F.W.T.	12/15/81
SHOE	9/15/89
JMM	11/5/02