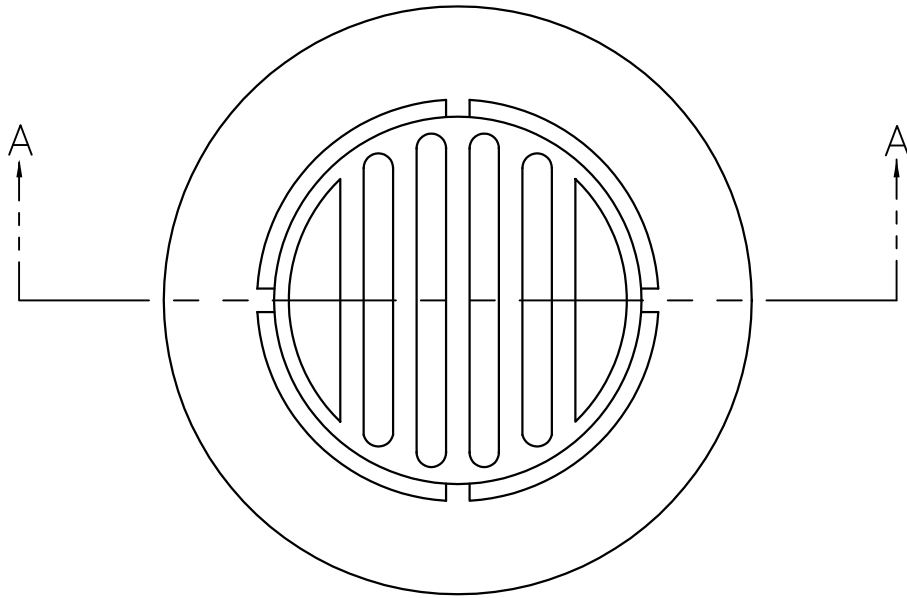
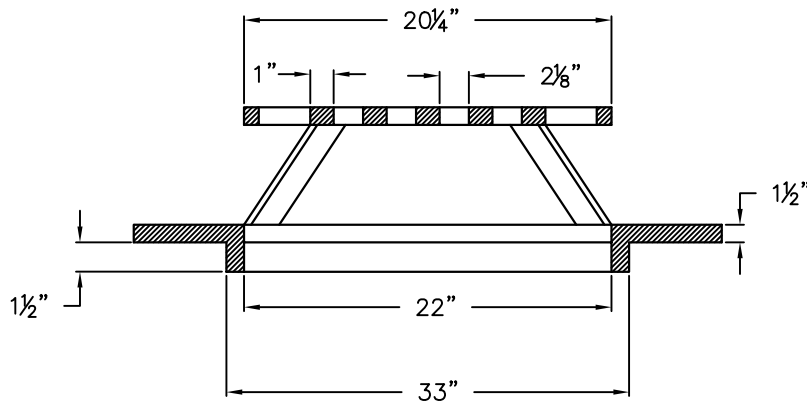


STANDARD DESIGN GRATE, TYPE 8, SPECIAL #1



PLAN



SECTION A-A

NOTES:

1. THE CAST GRATE MAY BE MADE OF EITHER GRAY IRON OR DUCTILE IRON.
2. DUCTILE IRON CASTING SHALL BE GRADED 65-45-12.
3. WEIGHT = 220 LBS.
4. TO BE USED IN UNPAVED NON-RESIDENTIAL AREAS OR AS SPECIFIED.

CITY OF DECATUR, ILLINOIS
DEPARTMENT OF ENGINEERING
INFRASTRUCTURE

ADOPTED JANUARY 1, 2003

DIRECTOR OF ENGINEERING & INFRASTRUCTURE

ISSUED:	
REVISIONS	
BY	DATE
KSG	10/2002

STANDARD #3044