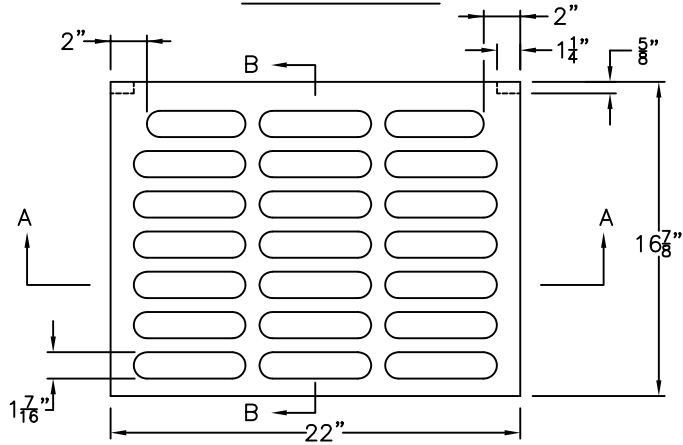
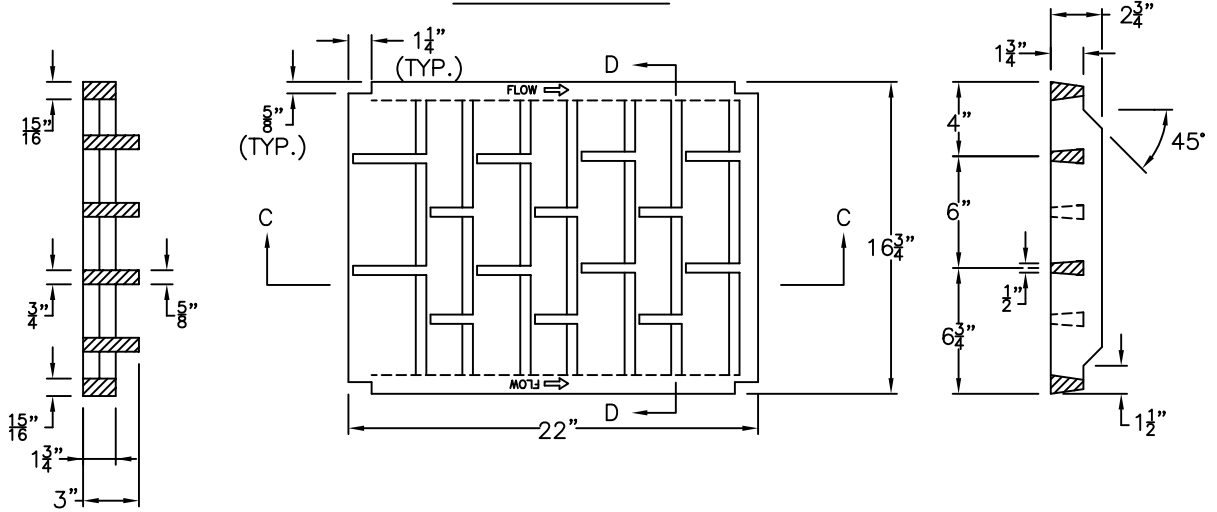


# STANDARD DESIGN FRAME AND GRATE TYPE 3 & 3V

**GRATE TYPE 3**

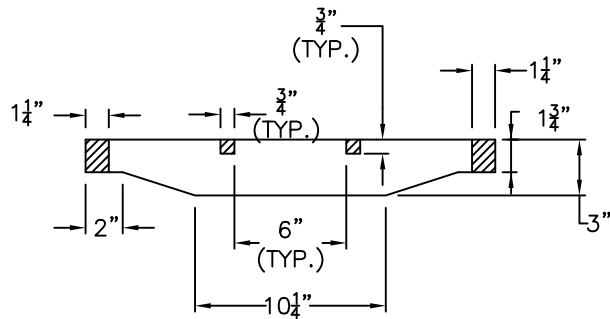


**GRATE TYPE 3V**

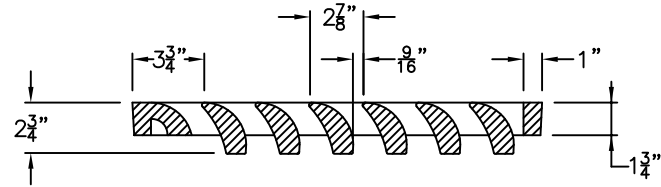


**SECTION B-B**

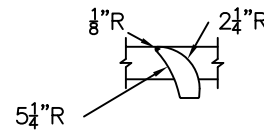
**SECTION D-D**



**SECTION A-A**



**SECTION C-C**



**VANE  
DETAILS**

CITY OF DECATUR, ILLINOIS  
DEPARTMENT OF ENGINEERING  
& INFRASTRUCTURE

ADOPTED JANUARY 1, 2003

DIRECTOR OF ENGINEERING & INFRASTRUCTURE

ISSUED: 7-3-78

REVISIONS  
BY DATE

F.W.T.	12/15/81
SHOE	9/15/89
JMM	5/01/02

STANDARD #3034  
SHEET #2 OF 2