



DECATUR MUNICIPAL BAND
154TH SEASON

JIM CULBERTSON
MUSICAL DIRECTOR / CONDUCTOR

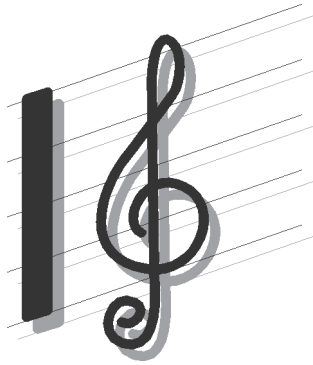
JUNE 2011

SHIRLEY KISTLER
MASTER OF CEREMONIES

CENTRAL PARK
7:00 PM – 9:00 PM

JUNE 6 *KRISTIN SHAFER*
JUNE 13 *MOLLY SHADE*
JUNE 20 *JULIE SHAFER*
JUNE 27 *TED HESSE*

JESSICA VILLARREAL
GARY SHAW
PETE HARRIS
JIM WALKER



Insurance Professionals Providing **Peace of Mind.**



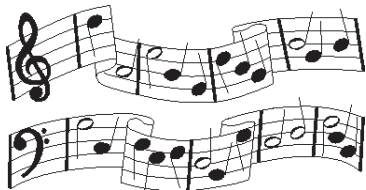
AUTO HOMEOWNERS BUSINESS LIFE ACCIDENT HEALTH

CALL

KEVIN BREHENY • RANDY CANNADY • RON KOOPMAN • TIM PATTON
GREG NUSSBAUM • CURT RASSI • DAN MARTINI • KARIN BETZER
SHANNON GARRETT • PAM COE • LINDA STEWART • MATT BENNETT

J.L. Hubbard
INSURANCE and BONDS
A Soy Capital Company

1090 SOUTH ROUTE 51 FORSYTH, ILLINOIS 62535 217.877.3344 WWW.JLHUBBARD.COM



THE DECATUR MUNICIPAL BAND JIM CULBERTSON, MUSICAL DIRECTOR & CONDUCTOR

THE DECATUR MUNICIPAL BAND ENTERED ITS ONE HUNDRED-FIFTY FOURTH YEAR OF CONTINUOUS SERVICE SINCE ITS INCEPTION ON SEPTEMBER 19, 1857 - MAKING IT ONE OF THE OLDEST NONMILITARY BANDS IN CONTINUOUS SERVICE IN THE UNITED STATES AND CANADA.

CONCEIVED BY NINE CHARTER MEMBERS THE BAND WAS KNOWN VARIOUSLY AS THE DECATUR BRASS BAND, DECATUR COMET BAND, AND DECATUR SILVER BAND UNTIL 1871 WHEN IT WAS REORGANIZED BY ANDREW GOODMAN, THE NEW CONDUCTOR WHO WAS ENTICED TO LEAVE HIS COLUMBUS, OH HOME FOR THAT PURPOSE. HE SERVED AS ITS DIRECTOR UNTIL DECLINING HEALTH FORCED HIM TO RETIRE IN 1880. ALTHOUGH THE BAND WAS INCORPORATED AS THE DECATUR BAND IN 1885, IT WAS COMMONLY KNOWN AS "THE GOODMAN BAND" (OR "GOODMAN'S BAND") UNTIL 1942 WHEN IT WAS OFFICIALLY DESIGNATED AS THE DECATUR MUNICIPAL BAND AND CHARTERED WITHIN THE CITY OF DECATUR. AFTER GOODMAN'S DEATH, THE BAND CONTINUED WITH VARIOUS DIRECTORS FROM AMONG THE MEMBERSHIP, UNTIL ROBERT WALTER WAS HIRED TO DIRECT THE BAND IN 1887. HE CONTINUED AS ITS DIRECTOR UNTIL 1928 - SHORTLY BEFORE HIS DEATH. IT WAS DURING WALTER'S TENURE THAT THE BAND RECEIVED ITS GREATEST FAME, MARCHING IN PRESIDENT WILLIAM MCKINLEY'S 1901 INAUGURAL PARADE AS THE ILLINOIS NATIONAL GUARD 4TH INFANTRY REGIMENTAL BAND, PERFORMING THE DEDICATION CONCERT FOR THE ILLINOIS BUILDING AT THE WORLD'S FAIR IN ST. LOUIS IN 1904, AND AS GUEST PERFORMERS AT THE NEW HARMONY, INDIANA CENTENNIAL CELEBRATION IN 1914 (MR. WALTER WAS FOUND AND HIRED TO COME TO DECATUR WHILE HE WAS A PERFORMER IN THE NEW HARMONY, INDIANA BAND).

ALTHOUGH ORGANIZED AS A NONMILITARY BAND, THE GOODMAN BAND WAS MUSTERED INTO THE ILLINOIS NATIONAL GUARD 4TH INFANTRY DURING THE SPANISH-AMERICAN WAR AND BECAME ITS REGIMENTAL BAND. AS A REGIMENTAL BAND, IT WAS MUSTERED INTO ACTIVE SERVICE DURING FOUR WARS: THE CIVIL WAR; THE SPANISH-AMERICAN WAR; THE MEXICAN BORDER WAR; AND WORLD WAR I, WHEN THEY BECAME THE NATIONAL GUARD 130TH INFANTRY BAND.

THE PRESENT DECATUR MUNICIPAL BAND, DIRECTED BY JIM CULBERTSON SINCE 1979, IS COMPOSED OF HIGH SCHOOL AND COLLEGE STUDENTS, AND AREA ADULTS FROM ALL WALKS OF LIFE, ALL OF WHOM LOOK TO THE BAND AS A SERIOUS AVOCATION, OR AS A PRELUDE TO A LIFE-LONG PROFESSION. THESE DEDICATED MUSICIANS PLAY FOR A SMALL REMUNERATION - AND GREAT SATISFACTION IN PROVIDING HIGH-QUALITY MUSIC FOR THE DECATUR COMMUNITY. MR. CULBERTSON IS CELEBRATING HIS 33RD YEAR OF SERVING AS MUSICAL DIRECTOR AND CONDUCTOR.



**We've been in step with the school band
every step of the way**

**THOMPSON-KRAMER
MUSIC COMPANY**

School Band & Orchestra Instruments

School Trial Rental • Accessories • Sales • Repairs
"Ask Us - We'll Help You!"

2102 North Oakland Phone 877-1832 Decatur, Illinois

2011 CONCESSIONS

<i>JUNE 6</i>	<i>GRACE UNITED METHODIST CHURCH</i>
<i>JUNE 13</i>	<i>CONCORDIA LUTHERAN CHURCH</i>
<i>JUNE 20</i>	<i>LETTER CARRIERS AUXILIARY # 153</i>
<i>JUNE 27</i>	<i>CHRIST UNITED METHODIST CHURCH</i>
<i>JULY 4</i>	<i>GRACE UNITED METHODIST CHURCH</i>
<i>JULY 11</i>	<i>MACON Co. HOME & COMMUNITY ED.</i>
<i>JULY 18</i>	<i>LETTER CARRIERS AUXILIARY # 153</i>
<i>JULY 25</i>	<i>CHRIST UNITED METHODIST CHURCH</i>
<i>AUGUST 1</i>	<i>GRACE UNITED METHODIST CHURCH</i>
<i>AUGUST 8</i>	<i>MACON Co. HOME & COMMUNITY ED.</i>
<i>AUGUST 15</i>	<i>LETTER CARRIERS AUXILIARY # 153</i>
<i>AUGUST 22</i>	<i>MT. ZION UNITED METHODIST CHURCH</i>
<i>AUGUST 29</i>	<i>CHRIST UNITED METHODIST CHURCH</i>

DECATUR MUNICIPAL BAND WEB SITE:
[HTTP://WWW.CI.DECATUR.IL.US/BAND/BAND.HTML](http://www.ci.decaturn.il.us/BAND/BAND.HTML)



JESSICA VILLARREAL, FLUTE SOLOIST



KRISTIN SHAFER, VOCALIST

WEEK # 1 JUNE 6, 2011

THEME:
SEASON OPENER 2011

- MARCH "THE SOUTHERNER" RUSSELL ALEXANDER/ ARR. GLENN C. BAINUM
MT. EVEREST ROSSANO GALANTE
ETERNAL FATHER, STRONG TO SAVE CLAUDE T. SMITH
FANTAISIE PASTORALE HONGROISE FRANZ DOPPLER/ ARR. JOSEPH KREINES
JESSICA VILLARREAL, SOLOIST
BEGUINE FOR SHIMMERING FLUTES JAMES D. PLOYHAR
JESSICA VILLARREAL AND THE MUNI FLUTES
THE BANDWAGON PHILIP SPARKE
SNOW CAPS RICHARD L. SAUCEDO
SOMEONE TO WATCH OVER ME G. & I. GERSHWIN/ ARR. WARREN BARKER
KRISTIN SHAFER, VOCALIST
HIGHLIGHTS FROM DREAMGIRLS ... H. KRIEGER & TOM EYEN/ ARR. JAY BOCOOK
DREAMGIRLS * AND I AM TELLING YOU I'M NOT GOING
MOVE (YOU'RE STEPPING ON MY HEART)
KRISTIN SHAFER, VOCALIST
DUKE ELLINGTON! ARR. CALVIN CUSTER
DON'T GET AROUND MUCH ANYMORE * DO NOTHIN' TILL YOU HEAR FROM ME
SOPHISTICATED LADY * IT DON'T MEAN A THING (IF IT AIN'T GOT THAT SWING)

INTERMISSION

- GO SAMUEL R. HAZO
TO CONQUER THE SKIES ROBERT SHELDON
FESTIVITY JAMES CURNOW
AUTUMN LEAVES JOHNNY MERCER/ ARR. ALFRED REED
KRISTIN SHAFER, VOCALIST
SELECTIONS FROM WICKED HERMAN HUPFELD / ARR. WARREN BARKER
NO ONE MOURNS THE WICKED * DANCING THROUGH LIFE * NO GOOD DEED * DEFYING GRAVITY
KRISTIN SHAFER, VOCALIST
WASHINGTON GRAYS CLAUDIO S. GRAFULA
AMERICA THE BEAUTIFUL ARR. CARMEN DRAGON
STAR SPANGLED BANNER FRANCIS SCOTT KEY



WEEK # 2 JUNE 13, 2011

THEME:
NEW SCORES FOR THE MUNI

GARY SHAW, TROMBONE SOLOIST



MOLLY SHADE, VOCALIST

THE VICTORIOUS FIRST HENRY FILLMORE / ARR. ROBERT E. FOSTER
TRANSCENDENT JOURNEY ROSSANO GALANTE
THE GOLDEN SECRET OTTO M. SCHWARZ
FANTASTIC POLKA ARTHUR PRYOR

GARY SHAW, SOLOIST

CONCERTO FOR TROMBONES NORMAN LEYDEN
GARY SHAW AND THE MUNI TROMBONES

SIXTH SUITE FOR BAND ALFRED REED
I. MARCH MINIATURE II. SUMMER STROLL IV. AWA ODORI (JAPANESE DANCE)

SELECTIONS FROM DAMN YANKEES R. ADLER & J. ROSS/ ARR. PAUL YODER
NEAR TO YOU * HEART * WHATEVER LOLA WANTS * SHOELESS JOE!

MOLLY SHADE, VOCALIST

COLE PORTER ARR. R. R. BENNETT
ANYTHING GOES * BEGIN THE BEGUINE * NIGHT AND DAY

JUST ONE OF THOSE THINGS * BLOW, GABRIEL, BLOW

MOLLY SHADE, VOCALIST

BIG BAND SPECTACULAR ARR. JOHN HIGGINS
IN THE MOOD * SATIN DOLL * CIRIBIRIBIN * JUMPIN' AT THE WOODSIDE

INTERMISSION

LAND OF TOMORROW JAMES CURNOW
GHOST DANCES ROLAND BARRETT

WOUNDED KNEE, 1890

OVERTURE FROM KISMET R. WRIGHT & G. FORREST/ ARR. WALTER BEELER
STRANGER IN PARADISE * BAUBLES, BANGLES AND BEADS * NIGHT OF MY NIGHTS * HE'S IN LOVE

MOLLY SHADE, VOCALIST

RICHARD RODGERS SYMPHONIC PORTRAIT ARR. FRANK ERICKSON
THERE IS NOTHIN' LIKE A DAME * THE SOUND OF MUSIC * I WHISTLE A HAPPY TUNE

A WONDERFUL GUY * CLIMB EV'RY MOUNTAIN

MOLLY SHADE, VOCALIST

A.B.A. SYMPHONIC MARCH JOHN CHEETHAM
AMERICA THE BEAUTIFUL ARR. CARMEN DRAGON

STAR SPANGLED BANNER FRANCIS SCOTT KEY

JIM CULBERTSON

JIM CULBERTSON HAS SERVED AS MUSICAL DIRECTOR AND CONDUCTOR FOR THE DECATUR MUNICIPAL BAND SINCE 1979 AND CONTINUES TO BE ACTIVE SERVING AS GUEST CLINICIAN AND ADJUDICATOR THROUGHOUT THE UNITED STATES IN BOTH THE JAZZ AND CONCERT AREAS. JIM CONTINUES TO DEVELOP PROGRAMS FOR THE MUNI THAT ARE BOTH ENTERTAINING TO THE AUDIENCE AND MUSICALLY REWARDING TO THE MUSICIANS.



JIM CULBERTSON

JIM HAS BEEN THE DRIVING FORCE IN THE DECATUR WEST END MUSIC PROGRAM IN DECATUR FOR 39 YEARS, PREPARING HUNDREDS OF STUDENTS FOR CAREERS IN MUSIC AS TEACHERS AND PERFORMERS AS WELL AS INSTILLING AN APPRECIATION FOR MUSIC THAT CAN LAST A LIFETIME. FOR THE PAST 33 YEARS HE HAS LED THE MACARTHUR HIGH SCHOOL BAND PROGRAM, IN WHICH THE JAZZ BAND HAS EARNED THE DISTINCTION AS ONE OF THE PREMIER JAZZ GROUPS IN THE US.

JIM AND HIS WIFE CAROL HAVE MADE THEIR HOME IN DECATUR, ILLINOIS FOR THE PAST 39 YEARS AND ARE PROUD PARENTS OF THEIR DAUGHTER JAMIE, WHO LIVES IN CHICAGO AND THEIR SON BRIAN AND HIS WIFE MICHELLE WHO LIVE IN LOS ANGELES, CALIFORNIA.

SHIRLEY KISTLER

A DECATUR NATIVE, SHIRLEY KISTLER RECEIVED A BACHELOR'S DEGREE IN SPEECH AND THEATRE FROM ILLINOIS STATE UNIVERSITY AND A MASTER'S DEGREE IN COUNSELING FROM SANGAMON STATE UNIVERSITY.



SHIRLEY KISTLER

SHE STARTED TEACHING IN 1965 AND TAUGHT ENGLISH, SPEECH AND ACTING AT HER ALMA MATER, EISENHOWER HIGH SCHOOL SINCE 1967 AS WELL AS PRODUCING AND DIRECTING THE DRAMATIC AND MUSICAL PRODUCTIONS THERE. SHE RETIRED FROM THE DECATUR PUBLIC SCHOOL DISTRICT AT THE END OF THE 2001 SCHOOL YEAR. SHE ALSO TAUGHT PUBLIC SPEAKING AT RICHLAND COMMUNITY COLLEGE FOR 13 YEARS.

FOR MANY YEARS, SHE HAS DIRECTED CREATIVE DRAMATIC ACTIVITIES FOR CHILDREN AND ADULTS IN DECATUR. THIS SEASON MARKS SHIRLEY'S 23RD YEAR SERVING AS MC FOR THE MUNI BAND. THIS PAST SPRING, SHE CO DIRECTED "AGAIN STILL NO REFUNDS" FOR JUNIOR WELFARE.

MDSO: Major concert dates and tentative programs for 2011-2012:



September 5 Labor Day Pops in Nelson Park (FREE)

October 1 – Thomas Pandolfi, Piano (Subscription #1)

- Gliere *Russian Sailors' Dance*
- Liszt *Piano Concerto No. 1 in E-Flat*
- Wagner *Prelude and Liebestod from Tristan and Isolde*
- Ginastera *Dances from Estancia, Op. 8a*

**October 29 – Georgia Hornbacker, Violin (Subscription #2)
Sharon Chung, Viola**

- Haydn *Overture to La Fedelta Premiata*
- Mozart *Sinfonia Concertante in E-Flat, K. 364*
- Beethoven *Symphony No. 8 in F Major, Op. 93*

November 11/12/13 – Musical – The Sweet Smell of Success is a musical created by Marvin Hamlisch (music), Craig Carnelia (lyrics), and John Guare (book). The show is based on the 1957 movie of the same name. (Subscription #3)

February 4 – Young Artists Concert (Subscription #4)

- Gershwin *An American in Paris*
- Concertos/Arias (Millikin students will audition to perform with MDSO)

March 3 – Robert Belinic, Guitar (Subscription #5)

The Millikin Choral Union

- Bach/Stokowski *Toccata and Fugue in D Minor*
- Rodrigo *Concierto de Aranjuez*
- Ravel *Daphnis and Chloe, Suites Nos. 1 and 2*

April 21 – Bruce Gibbons, Organ (Subscription #6)

Opus 24 Choral Ensemble

- Piston *Prelude and Allegro for Organ and Strings*
- Schubert *Symphony No. 3 in D Major*
- Thompson *Frostiana*



PETE HARRIS, TRUMPET SOLOIST



JULIE SHAFER, VOCALIST

WEEK # 3 JUNE 20, 2011

THEME:
INTERNATIONAL MUSIC EXPERIENCE

- MARCH OF THE BELGIAN PARATROOPERS P. LEEMANS/ARR. CHARLES WILEY
- DA VINCIAN VISIONS LARRY CLARK
- ORIENTALS THOMAS DOSS
- CONCERTO FOR TRUMPET AND BAND MENDELSSOHN/ ARR. CHARLES KOFF
PETE HARRIS, SOLOIST
- LONDONDERRY AIR ARR. HAWLEY ADES
PETE HARRIS, SOLOIST
- BUGLERS HOLIDAY LEROY ANDERSON
PETE HARRIS & THE MUNI TRUMPETS
- ELSA'S PROCESSION TO THE CATHEDRAL LUCIEN CAILLIET
- PORTRAITS OF SPAIN TEO APARICIO BARBERAN
- THE KING AND I RICHARD RODGERS/ ARR. R.R. BENNETT
WHISTLE A HAPPY TUNE * WE KISS IN A SHADOW * MARCH OF THE SIAMESE CHILDREN
I HAVE DREAMED * SHALL WE DANCE * HELLO, YOUNG LOVERS
JULIE SHAFER, VOCALIST
- INTERNATIONAL DIXIELAND JAMBOREE BILL HOLCOMBE
BILL BAILEY * ST. JAMES INFIRMARY BLUES * WHEN THE SAINTS COME MARCHING IN

INTERMISSION

- SYMPHONIC DANCES FROM FIDDLER ON THE ROOF ARR. IRA HERSHEN
TRADITION * WEDDING DANCE # 1 * PERCHIK AND HODEL DANCE
CHAVA SEQUENCE * TO LIFE * DANCE
- THREE REVELATIONS FROM THE LOTUS SUTRA ALFRED REED
III. REJOICING
- HIGHLIGHTS FROM MARY POPPINS R. SHERMAN/ ARR. ALFRED REED
A SPOONFUL OF SUGAR * CHIM CHIM CHER-EE * SUPERCALIFRAGILISTICEXPIALIDOCIOUS
JULIE SHAFER, VOCALIST
- TWO IRISH SONGS ARR. ROBERT W. SMITH
JUG A PUNCH * OH DANNY BOY
JULIE SHAFER, VOCALIST
- FLIEGER-MARSCH HERMANN DOSTAL/ ARR. GEORGE S. HOWARD
- AMERICA THE BEAUTIFUL ARR. CARMEN DRAGON
- STAR SPANGLED BANNER FRANCIS SCOTT KEY

THE DECATUR MUNICIPAL BAND





**The Decatur
Municipal Band**
will present its

Annual Fall Concert

at the
Tabernacle Baptist Church
on

Oct. 11, 2011

at
7:30 p.m.
FREE ADMISSION
FREE PARKING

Manager - Secretary

TOM FERRIELL HAS BEEN BUSINESS MANAGER OF THE DECATUR MUNICIPAL BAND SINCE 1977 AND SECRETARY SINCE 1981. HIS SERVICE TO THE GROUP IN THESE POSITIONS CONSISTS OF SECURING PERSONNEL, PAYROLL, PUBLICITY, AND MAINTAINING EQUIPMENT AND UNIFORMS. HE HAS PERFORMED IN THE TRUMPET SECTION SINCE 1970. TOM IS A 1975 GRADUATE OF MILLIKIN UNIVERSITY HOLDING BACHELOR OF ARTS DEGREE IN EDUCATION. TOM IS A RETIRED TEACHER.



TOM FERRIELL

MUNICIPAL BAND OFFICERS

PRESIDENT JIM WALKER
VICE-PRESIDENT BOB BYRKIT
SECRETARY/MANAGER TOM FERRIELL

BOARD MEMBERS

AMANDA ALLEN STEVE CRAVEN
MIKE McDONALD LYN SLY

LIBRARIAN JIM WALKER
PUBLIC RELATIONS STEVE CRAVEN



JIM WALKER, CLARINET SOLOIST



TED HESSE, VOCALIST

WEEK # 4 JUNE 27, 2011

*THEME:
BAND CLASSICS*

THE FREE LANCE MARCH J.P. SOUSA/ ARR. WILLIAM D. REVELLI
THE HOUNDS OF SPRING ALFRED REED
TO A NEW DAWN PHILIP SPARKE
BALLAD FOR CLARINET RICHARD MALTBY

JIM WALKER, SOLOIST

A TRIBUTE TO LIONEL ANDRE WAIGNEIN

JIM WALKER, SOLOIST

PRELUDE, SICILIANO AND RONDO MALCOLM ARNOLD
IRISH TUNE FROM COUNTY DERRY AND SHEPHERD'S HEY PERCY GRAINGER
WHEN I FALL IN LOVE E. HEYMAN & V. YOUNG/ ARR. MICHAEL BROWN

TED HESSE, VOCALIST

MUSIC FROM GIRL CRAZY IRA & GEORGE GERSHWIN/ ARR. JAMES BARNES

*I GOT RHYTHM * BUT NOT FOR ME * BIDIN' MY TIME * EMBRACEABLE YOU*

TED HESSE, VOCALIST

THE SAINT'S HALLELUJAH ARR. LUTHER HENDERSON

INTERMISSION

SINFONIA NOBILISSIMA ROBERT JAGER
HANDEL IN THE STRAND PERCY GRAINGER/ ARR. K. BRION & L. SCHISSEL
A TRIBUTE TO HAROLD ARLEN ARR. JAMES KESSLER

*IT'S ONLY A PAPER MOON * COME RAIN OR SHINE * GET HAPPY*

*STORMY WEATHER * THAT OLD BLACK MAGIC*

TED HESSE, VOCALIST

BILLY JOEL IN CONCERT ARR. WARREN BAKER

*MOVIN' OUT * PIANO MAN * ONLY THE GOOD DIE YOUNG*

TED HESSE, VOCALIST

NATIONAL EMBLEM E.E. BAGLEY/ ARR. FREDERICK FENNEL
AMERICA THE BEAUTIFUL ARR. CARMEN DRAGON
STAR SPANGLED BANNER FRANCIS SCOTT KEY

DECATUR MUNICIPAL BAND
154TH SEASON

JIM CULBERTSON, MUSICAL DIRECTOR / CONDUCTOR

SHIRLEY KISTLER, MASTER OF CEREMONIES

2011 SUMMER LINE UP

THEMES, GUEST VOCALIST & INSTRUMENTAL SOLOIST

MONDAY NIGHT	THEME	GUEST VOCALIST	INSTRUMENTAL SOLOIST
JUNE 6	SUMMER SERIES OPENER	KRISTIN SHAFER	JESSICA VILLARREAL
JUNE 13	NEW SCORES FOR THE MUNI	MOLLY SHADE	GARY SHAW
JUNE 20	INTERNATIONAL MUSIC EXPERIENCE	JULIE SHAFER	PETE HARRIS
JUNE 27	BAND CLASSICS	TED HESSE	JIM WALKER
JULY 4	FOURTH OF JULY CELEBRATION	ANN BORDERS	
JULY 11	MARCH KINGS	DEBBIE SEELHOEFER	PETE HARRIS
JULY 18	ON THE CLASSICAL SIDE	HADI GIBBONS	MIKE McDONALD
JULY 25	FAMOUS COMPOSER SERIES	KATHLEEN BELL	AARON HYNDS
AUGUST 1	CURNOW, SMITH & SPARKE	JULIE ANDREWS	DOUG WILCOX
AUGUST 8	CELEBRATION FINALE	FRANCIE BROWN	DOUG PHILLIPS
AUGUST 15	POTPOURRI OF SCORES	MARY & PETER MILLER	PERRY RASK
AUGUST 22	MUNI MUSICIANS CONDUCT	ANDREA POPE	DENNIS JONES
AUGUST 29	SUMMER SERIES CLOSER	TBA	TBA

THE DECATUR MUNICIPAL BAND
2011 SCHEDULE

DATE	LOCATION	TIME
JUNE 6	CENTRAL PARK	7:00 PM
JUNE 12	FAIRVIEW PARK	6:00 PM
JUNE 13	CENTRAL PARK	7:00 PM
JUNE 19	FAIRVIEW PARK	6:00 PM
JUNE 20	CENTRAL PARK	7:00 PM
JUNE 26	FAIRVIEW PARK	6:00 PM
JUNE 27	CENTRAL PARK	7:00 PM
JULY 3	FAIRVIEW PARK	6:00 PM
JULY 4	CENTRAL PARK	7:00 PM
JULY 10	FAIRVIEW PARK	6:00 PM
JULY 11	CENTRAL PARK	7:00 PM
JULY 17	FAIRVIEW PARK	6:00 PM
JULY 18	CENTRAL PARK	7:00 PM
JULY 24	FAIRVIEW PARK	6:00 PM
JULY 25	CENTRAL PARK	7:00 PM
JULY 31	FAIRVIEW PARK	6:00 PM
AUGUST 1	CENTRAL PARK	7:00 PM
AUGUST 6	DECATUR CELEB. PARADE	10:00 AM
AUGUST 8	CENTRAL PARK	7:00 PM
AUGUST 15	CENTRAL PARK	7:00 PM
AUGUST 22	CENTRAL PARK	7:00 PM
AUGUST 29	CENTRAL PARK	7:00 PM
SEPTEMBER 5	LABOR DAY PARADE	10:00 AM
OCTOBER 11	FALL CONCERT TABERNACLE BAPTIST CHURCH	7:30 PM

DECATUR MUNICIPAL BAND

2011 PERSONNEL

JIM CULBERTSON, DIRECTOR

FLUTE

ROMA ALLISON
MARY LITTLE
RHONDA HUTCHENS
JESSICA VILLARREAL
JACK SCHEPPER
JENNIFER KATER
CARISSA CRAVEN

CLARINET

JIM WALKER
DARRELL AYDELOTT
JAN DOBBS
DOUG PHILLIPS
BILL ALLISON
BILL CLARK
DAVE ANDERSON
STEVE JACKSON
TIM HOLL
KURT NIEHAUS
ANTHONY TSIGOLAROFF

BASS CLARINET

ADAM BLAKEY

OBOE

LYN SLY
SAMANTHA DIDIER

BASSOON

BRUCE GIBBONS
LEAH CURRY

SAXOPHONE

AMANDA ALLEN
DENISE ISMARI
CLAIRE NICHOLSON
STEPHANIE DOCTOR

HORN

STEVE SCHEPPER
STEVE CRAVEN
DICK DICKINSON
GEORGE OSBORN
NEAL SMITH
KINZIE SELLERS

TRUMPET

PETE HARRIS
MIKE McDONALD
LEE FREELAND
WAYNE RUTHERFORD
TOM FERRIELL
CHRIS STRONG
SCOTT ANDREWS
ERIC HANSON
SARAH BOLINE
ZACH GIBBONS
ALEX KIDD
PHILLIP TSIGOLAROFF*

TROMBONE

LARRY OSELAND
BOB BYRKIT
NATE SALTUS
LARRY NIEHAUS
ERIC DAWSON

TUBA

ERIC LUTZ
TOM MILLER
AARON HYNDS

STRING BASS

GAROLD FOWLER

*2011 INTERNS

BARITONE

JEFF MOMA
JASON WADDELL

PERCUSSION

STEVE SCHEPPER
LYN SLY
GARRY NIEHAUS
SEAN McDONALD
AARON VILLARREAL
BOBBI SHAFFER
KAT STOWELL
MALLORY WIEDENKELLER

SOUND TECHNICIANS

KENNY SMITH

PRESIDENT

JIM WALKER

VICE-PRESIDENT

BOB BYRKIT

MANAGER/SECRETARY

TOM FERRIELL

BOARD MEMBERS

AMANDA ALLEN
STEVE CRAVEN
MIKE McDONALD
LYN SLY

SET UP CREW

SEAN McDONALD
ZACH GIBBONS
AARON VILLARREAL
SARAH BOLINE
ADAM BLAKEY
ALEX KIDD
CARISSA CRAVEN
ERIC DAWSON
KAT STOWELL